

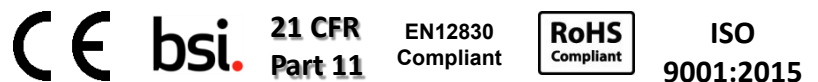


- Temperature range of -100°C to 40°C (-148°F to 104°F)
- 1 meter Teflon cable connects stainless steel temperature probe to the data logger
- Large LCD Display with multifunctional viewing
- Large memory capacity ; 8048 readings
- Available as a single trip or multi-use unit

## iMiniPlus DRY ICE



### CERTIFICATIONS



### Product Specifications *(continued on back)*

Logger	
Product Code	MP-OE-N-8-L (multi-use), MP-ST-N-8-L (single trip)
Memory Options	8K readings
Program Interval	5 seconds to 18 hours
Time Accuracy	+/- 1 minute per month
Sensors	External
Temperature Range	-100°C to 40°C (-148° to 104°F)
Temperature Accuracy	From -100°C to -80°C +/- 1.0°C (-148°F to -112°F +/- 1.8°F) From -79°C to -10°C +/- 0.7°C (-111°F to 14°F +/- 1.3°F) From -9°C to 40°C +/- 0.6°C (15°F to 104°F +/- 1.0°F)
Resolution	0.1°C (0.1°F)
Sensor Response Time	T90 of 5 minutes
LCD Operation Range	-20°C to 70°C (-4°F to 158°F)
Alarm Threshold	2
Alarm Configuration	HIGH & LOW
Bookmark	Yes
Preprogram Option	User programmable; preprogramming available
Start Option	Push button and/or timer
Auto Restart	No
Start Delay	Yes
Stop Option	Yes (button can be disabled)
Size	83x57x17mm (excluding lug & external sensor)
Weight	70 grams (including battery)

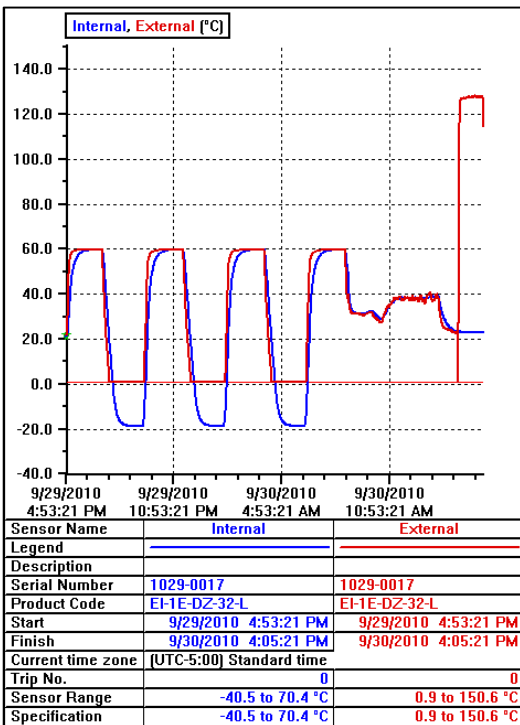


# iMiniPlus DRY ICE

## Product Specifications *(continued from front)*

Logger	
Case Material	Polycarbonate/ABS
Battery	User replaceable lithium battery; 3v coin cell
IP Rating	IP 64 (with DB9 cap on)
Warranty	2 year excluding battery (multi-use) 1 trip excluding battery (single trip)
Calibration	NIST traceable upon request
Accuracy Certificate	Yes
Other Certification	ISO9001:2008, CE, RoHS
Shelf Life	1-2 years (depending on usage)
Interface	USB to Serial
Software	Console Pro
Default File Format	.LCF (data can be exported as SYLK, CSV, TXT, LCF with Console Pro)
Security	Password protected (programmable using Console Pro Software)

## Graphs, readings and summary



Index	Elapsed Time	Date	Time	Freezer (°C)
Serial Number				1301-0011
H/W version				2.2x
Trip No.				1
Description				
Battery				92.5 %
Original time zone				(UTC+8:00) Standard time
Current time zone				(UTC-5:00) Standard time
Start		6/17/2013	5:00:00 AM	
Finish		6/17/2013	9:35:00 PM	
Sampling				5 Minutes
Readings				200 (995 Minutes)
Active				-40.5 to 70.4 °C
Specification				-35.0 to -15.0 °C
Average				-20.5
Highest				24.7
Lowest				-24.9
PHI Aerobic				0.74
PHI Anaerobic				0.52
MKT				-1.01
Total No. of Pulses				-342.94
Growing Degree Day				0.0
Out Of Specification				80 Minutes
				10 Minutes from -14.9 to -10.0
				5 Minutes from -9.9 to -5.0
				5 Minutes from -4.9 to 0.0
				450 Seconds from 0.1 to 5.0
				5 Minutes from 5.1 to 10.0
				5 Minutes from 10.1 to 15.0
				5 Minutes from 15.1 to 20.0
				2250 Seconds from 20.1 to 25.0
1	00:00:00	6/17/2013	5:00:00 AM	1.8
2	00:05:00	6/17/2013	5:05:00 AM	-1.5
3	00:10:00	6/17/2013	5:10:00 AM	-7.7
4	00:15:00	6/17/2013	5:15:00 AM	-11.6
5	00:20:00	6/17/2013	5:20:00 AM	-14.7
6	00:25:00	6/17/2013	5:25:00 AM	-16.9
7	00:30:00	6/17/2013	5:30:00 AM	-18.5

## Views

## Links

Description	Details
1301-0011	6/17/2013 6:0...
Freezer	-40.5 to 70.4 °C
0111-5555	8/24/2012 4:4...
Air Temp	-40.5 to 70.4 °C
Humidity	0 to 100 %RH
QLD CHILLER (0127-3...	7/24/2012 6:0...
Humidity	-40.5 to 70.4 °C
0133-008	12/17/2012 1...
Internal	0.9 to 125 °C
External	25 to 150.6 °C



United States  
Edison, NJ  
1-888-827-3393

Canada  
Anjou, QC  
1-888-423-7251 (QC)  
1-800-667-2532 (BC)

France  
Maromme, France  
+ 33 (0) 2 32 82 59 65